



2910 KAUFFMAN AVENUE, VANCOUVER, WA 98660

Suicide-Resistant Products for Behavioral Health

Phone: (503) 929-8780
(360) 823-3995

Fax: (360) 693-0614

Email: nate@cascaresh.com
lorin@cascaresh.com

Website: www.cascaresh.com



2910 KAUFFMAN AVENUE, VANCOUVER, WA 98660

Suicide-Resistant Products for Behavioral Health

Thank you for considering Cascade Specialty Hardware as your source for anti-ligature hardware and accessories.

At Cascade Specialty Hardware, we strive to provide quality products at competitive prices and with great customer service. If you have any questions, need a quote or would like a sample for review, please let me know. I'll do my best to answer your questions or to quickly respond to your request.

All of your products are proudly made in the U.S.A.

Thanks again,

Nate Parker
Customer Service Manager
Cascade Specialty Hardware, Inc.
Ph: (503) 929-8780

Made in the U.S.A.

Phone: (503) 929-8780
(360) 823-3995
Fax: (360) 693-0614

Email: nate@cascadesh.com
lorin@cascadesh.com
Website: www.cascadesh.com



2910 KAUFFMAN AVENUE, VANCOUVER, WA 98660

Suicide-Resistant Products for Behavioral Health

Model C-200 SAFETY DOOR PULL

For use in areas where suicide prevention is a primary concern. Compatible with both wood and metal door applications.

- Features:** Unique anti-ligature design resists suicide-by-hanging attempts.
- Size:** 6" x 1 1/2" x 1 1/2"
- Material:** 6061-T6 Aluminum
- Style:** Anti-Ligature/Finger Grip
- Finish:** Durable Powder Coat Finish, Silver
- Mounting Screws:** (2) Security Flat Hd, Stnls
#14 x 2" (Wood Door Application)
or 1/4-20 x 2" (Metal Door Application)



Made in the U.S.A.

Phone: (503) 929-8780
(360) 823-3995
Fax: (360) 693-0614

Email: nate@cascadesh.com
lorin@cascadesh.com
Website: www.cascadesh.com



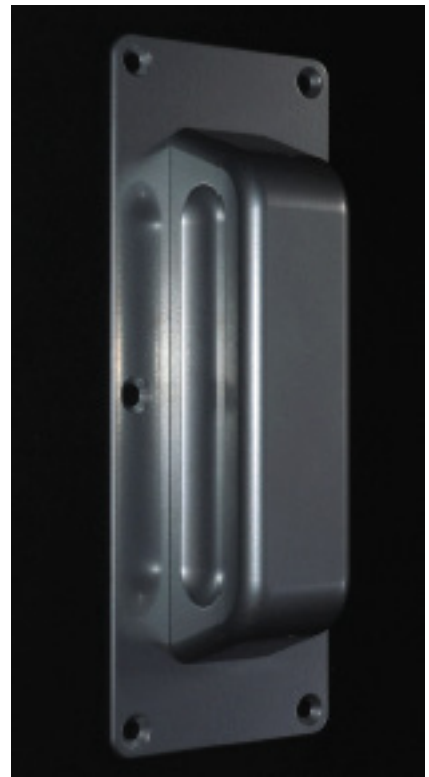
2910 KAUFFMAN AVENUE, VANCOUVER, WA 98660

Suicide-Resistant Products for Behavioral Health

Model C-201 SAFETY DOOR PULL, PLATE MOUNTED

For use in areas where suicide prevention is a primary concern. Compatible with both wood and metal door applications.

- Features:** Unique anti-ligature design resists suicide-by-hanging attempts. Pull is plate mounted for enhanced tamper resistance and architectural appearance.
- Size:** 6" x 1 1/2" x 1 1/2" Pull
8" x 3" x 3/16" Mounting Plate
- Material:** 6061-T6 Aluminum Pull
Mild Steel Plate
- Style:** Anti-Ligature/Finger Grip w/Plate
- Finish:** Durable Powder Coat Finish, Silver
- Mounting Screws:** (6) Security Flat Hd, Stnls
#10 x 3/4" (Wood Door Application)
or 10-24 x 3/4" (Metal Door Application)



Made in the U.S.A.

Phone: (503) 929-8780
(360) 823-3995
Fax: (360) 693-0614

Email: nate@cascadesh.com
lorin@cascadesh.com
Website: www.cascadesh.com



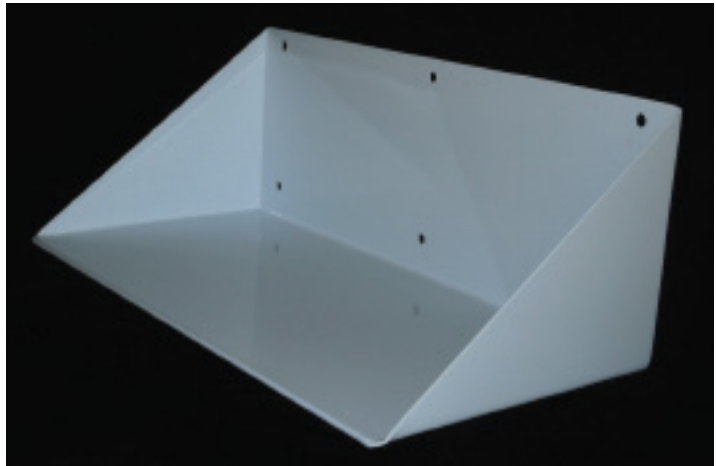
2910 KAUFFMAN AVENUE, VANCOUVER, WA 98660

Suicide-Resistant Products for Behavioral Health

Model C-300 SAFETY SHELF

An attractive and durable shelf for use in areas where suicide prevention is a primary concern.

- Features:** 14 ga. Steel construction with sloped sides to resist suicide-by-hanging attempts.
- Size:** 18" Length x 6" Ht. x 8" Depth
- Material:** 14 ga. Cold Rolled Steel
- Style:** Safety Shelf
w/ Anti-ligature design
- Finish:** Durable Powder Coat
Finish, White
- Mounting Screws:** (6) Security Button
Hd, Stnls, 1/4-20 x 1"



Made in the U.S.A.

Phone: (503) 929-8780
(360) 823-3995
Fax: (360) 693-0614

Email: nate@cascadesh.com
lorin@cascadesh.com
Website: www.cascadesh.com



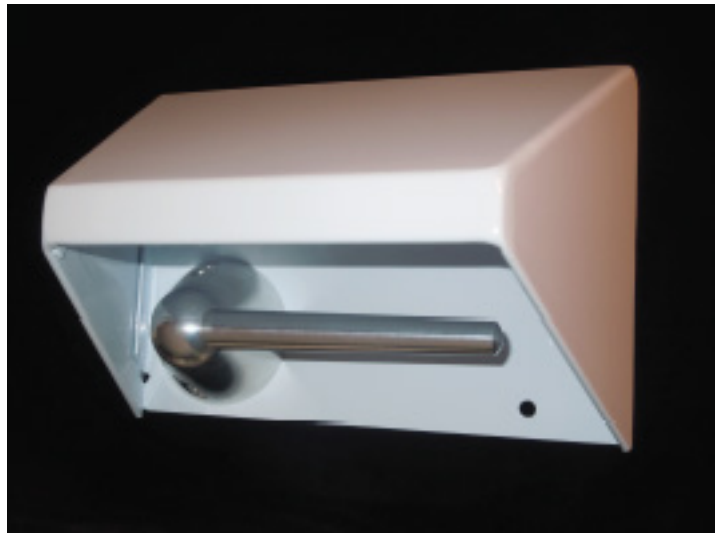
2910 KAUFFMAN AVENUE, VANCOUVER, WA 98660

Suicide-Resistant Products for Behavioral Health

Model C-400 SAFETY TOILET PAPER HOLDER

Looks and functions like a standard toilet paper holder, but sloped surface housing and dropping spindle eliminate ligature attachment points. Resolves infection control and maintenance issues commonly associated with recessed canister and foam spindle type holders: No need to handle the toilet paper roll at each use - No replacement spindles required.

- Features:** Architecturally pleasing and ligature-resistant design features a sloped-top housing and a spindle that drops under excessive load.
- Size:** 10 1/2" x 6 1/4" x 5 1/8"
- Material:** 18 ga. Cold Rolled Steel Housing
Aluminum Spindle and Body
- Style:** Anti-Ligature Toilet Paper Holder with Dropping Spindle
- Finish:** Durable White Powder Coat Housing
Chrome Plated Spindle and Body
- Mounting Screws:** (4) 1/4" Security Button Hd, Stnls



Patent Pending

Made in the U.S.A.

Phone: (503) 929-8780
(360) 823-3995
Fax: (360) 693-0614

Email: nate@cascadesh.com
lorin@cascadesh.com
Website: www.cascadesh.com



2910 KAUFFMAN AVENUE, VANCOUVER, WA 98660

Suicide-Resistant Products for Behavioral Health

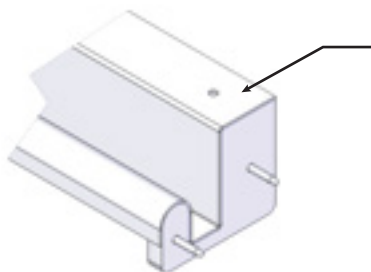
Model C-500 SAFETY CLOSET ROD

For use in areas where suicide prevention is a primary concern. Accepts standard clothes hanger design.

- Features:** Unique anti-ligature design resists suicide-by-hanging attempts. Mounts under closet shelf and runs wall to wall for a secure installation. May be ordered in standard lengths of 48, 60, 72, 84 or 95 inches or in custom lengths to match field conditions.
- Size:** 3" Height x 4 1/8" Depth x Length as Required
- Material:** 14 Gauge Cold Rolled Steel
- Style:** Anti-Ligature/Closet Rod
- Finish:** Durable Powder Coat Finish, White
Custom Colors Available
- Mounting Screws:** Security Button Hd, Stnls
#10 x 1/2" (Qty. as Required)



NEW ACCESSORY!



CLOSET ROD SUPPORT BLOCK

Closes end of Rod to eliminate potential gaps. Minimizes need for security caulking. Fully supports closet shelf without intermediate support brackets.

Made in the U.S.A.

Phone: (503) 929-8780
(360) 823-3995
Fax: (360) 693-0614

Email: nate@cascadesh.com
lorin@cascadesh.com
Website: www.cascadesh.com



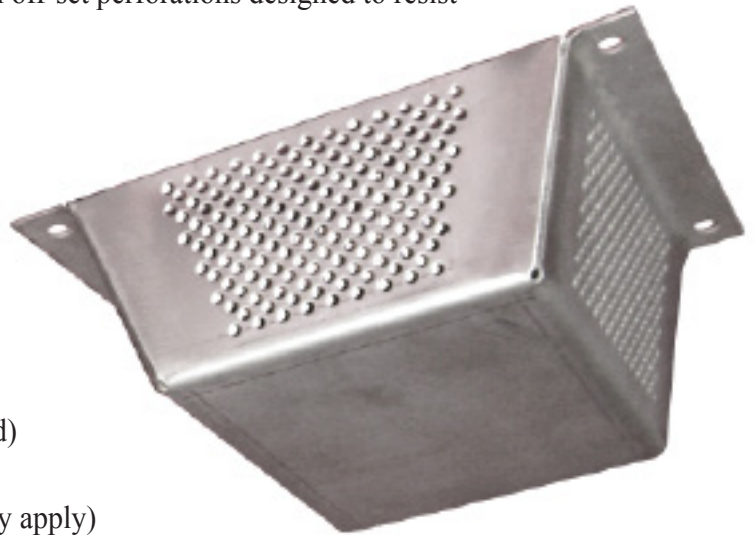
2910 KAUFFMAN AVENUE, VANCOUVER, WA 98660

Suicide-Resistant Products for Behavioral Health

Model C-700 SMOKE DETECTOR COVER

Designed to provide protection for smoke detectors in behavioral health facilities or other institutions. Unique anti-ligature design maintains smoke-detection sensitivity*.

- Features:** 14 ga. Steel construction with off-set perforations designed to resist suicide-by-hanging attempts.
- Size:** 9 3/4" x 8 1/4" x 3 1/2"
- Material:** 14 ga. Cold rolled Steel Housing
- Style:** Smoke Detector Cover w/ Anti-Ligature Design
- Finish:** Durable Powder Coat Finish, Silver or White
- Mounting Screws:** Accepts 1/4" to 5/16" Security Screws (not included)
- Optional Features:** Stainless Steel Construction (Minimum order quantity may apply)



Patent Pending

** Note: The C-700 has been independently tested, but is not UL Listed.*

Made in the U.S.A.

Phone: (503) 929-8780
(360) 823-3995
Fax: (360) 693-0614

Email: nate@cascadesh.com
lorin@cascadesh.com
Website: www.cascadesh.com

SAFEBAR[®] GRAB BARS

Made in the U.S.A.

For Healthcare and Correctional Facilities or Retrofit Applications



***ADA Compliant
Suicide Resistant***

OUTSTANDING FEATURES

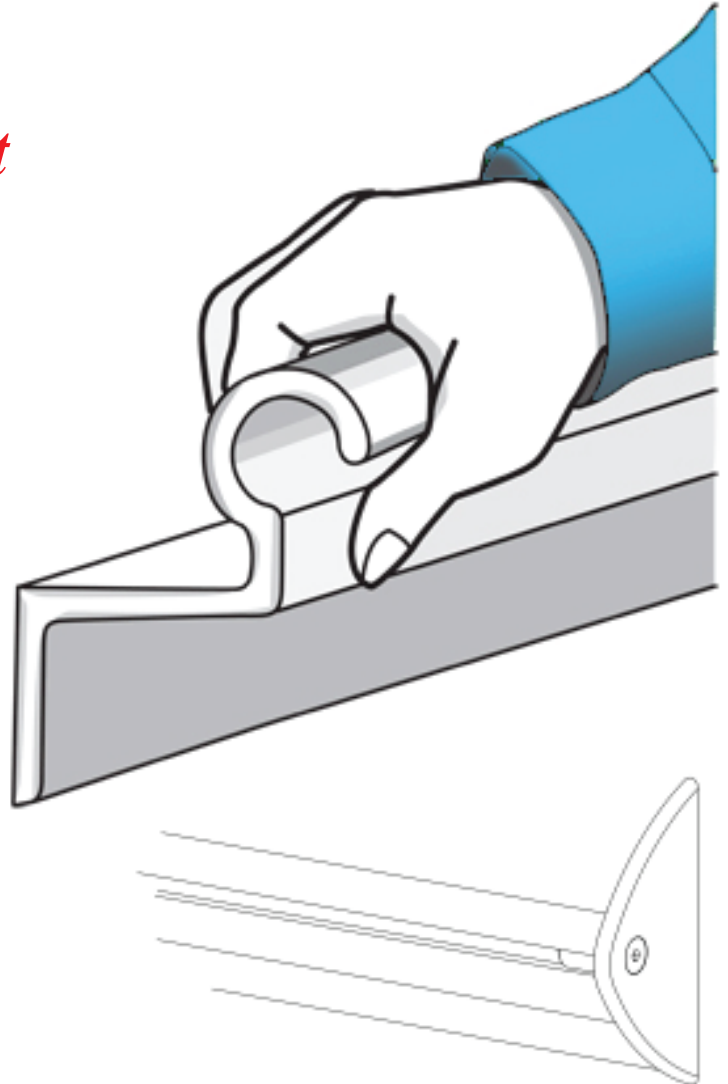
- ✓ Suicide Resistant, No Space Between Wall and Bar
- ✓ Installed in Healthcare and Correctional Facilities Across The Nation
- ✓ The Only Security Bar to Allow Full Grip
- ✓ Variable Fastener Spacing for Easy Retrofits
- ✓ Self-Draining for Wet Applications
- ✓ Open for Contraband Inspection
- ✓ Specially Hardened Alloy
- ✓ Suitable for Continuous Handrailings
- ✓ Available In Sizes to Meet All Applications

***MINIMIZE YOUR RISK, SAVE
TIME & MONEY***



2910 KAUFFMAN AVENUE, VANCOUVER, WA 98660

Nate Parker (503) 929-8780 email: nate@cascadesh.com
Lorin Armstrong (360) 823-3995 email: lorin@cascadesh.com
Fax: (360) 693-0614



NOW AVAILABLE WITH STANDARD
OR
SELF-DRAINING END CAP OPTION

View all of our Ligature-Resistant products
at: www.cascadesh.com

PRODUCT DESCRIPTION:

Use: For installation in toilet rooms, shower stalls, at bathtubs, and at other locations required to have grab bars to provide assistance for persons with disabilities or mobility impairment. The design is also suitable to be used as continuous handrails. The unique design meets the requirements of the Americans with Disabilities Act and resists suicide-by-hanging attempts. The one piece design resists abuse and does not offer a place to conceal contraband. To facilitate retrofit installations SAFEBAR® grab bars are not pre-drilled for fasteners and offer a continuous mounting surface. This allows adaptation to a variety of mounting conditions where backing, which is critical for proper attachment, may not align with conventional grab bar mounting points. These features make SAFEBAR® a product well suited for secure facilities such as Behavioral Health Facilities, Hospitals, Juvenile Detention Facilities, Courthouses, Jails and Prisons.

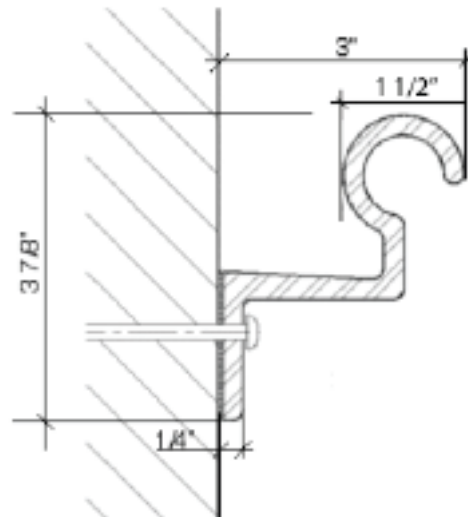
Materials: SAFEBAR® grab bars are extruded from 6063-T52 alloy aluminum and receive a special surface treatment to resist scratching. All edges are radiused and carefully finished.

Available Sizes and Cost: SAFEBAR® grab bars are available from stock in straight lengths of 18", 24", 30", 36", 42", 48", 54", and 60". Bars in custom lengths and L-corner bars are available on special order. SAFEBAR® grab bars are competitively priced and can be shipped by UPS upon receipt of order. To order, contact Cascade Specialty Hardware.

Installation: Determine installation height and location. Locate appropriate backing locations and transfer layout to SAFEBAR®. Drill holes 1/32" larger than fastener diameter, 3/4" from bottom of the mounting flange.

Before securing bar to wall apply a continuous bead of acrylic latex sealant to back of mounting flange, both top and bottom. Secure to wall and wipe away any excess sealant with a moist cloth. (Note: For security applications epoxy sealant is recommended.)

Maintenance: Normal cleaning with a dry cloth or non-acidic detergent is all that is required to keep your SAFEBAR® grab bars looking new.



To Specify: Grab bars shall be manufactured by SAFEBAR®. Distributed by Cascade Specialty Hardware, Inc.

1. Material: Extruded 6063-T52 aluminum.
2. Finish: Hard coat anodize, clear. Optional Finish: Powder coat; 1.8-2.5 mil. thick (White, Almond, Silver, other colors available upon request).
3. Sizes: Reference drawings for lengths and configurations.
4. All exposed edges rounded and finished.
5. End Cap Option: Provide factory installed End Caps (Specify Standard or Self-Draining).
6. Acceptable Product: SAFEBAR® by CASCADE SPECIALTY HARDWARE, INC.; No substitutions.

